

The CHOPPER

WINTER 2009

UNITED AUTOMOBILE, AEROSPACE & AGRICULTURAL IMPLEMENT WORKERS OF AMERICA

UAW LOCAL 1069, 1000 E. Fourth Street, Eddystone, PA 19022
Uawlocal1069@hotmail.com [P] 610.876.6217 [F] 610.876.3756



THE PRESIDENT'S REPORT ANTHONY J. FORTE

Although our contract has been ratified and taken effect, our work is not done. While it is certainly reassuring to know we have 5 years of labor peace along with economic raises and fixed health care costs firmly in place until 2014, our responsibility as your elected union officials doesn't stop. No official will rest on their laurels, instead we will continue to police and enforce our new agreement and work even harder to insure your rights in the work place.

We are close to having a final draft of the new collective bargaining agreement ready to go to print. The bargaining committee is scheduled to meet with the company on December 21st to review the latest grammatical revisions and to make sure that nothing has been overlooked or left out. Once both teams are satisfied with the final draft the company will have the books printed and distributed. There is no language being debated or refuted by either the Union or the Company at this time. Only general housekeeping remains.

The issue of vacation and sick leave usage should finally be settled. Vacation may be scheduled and approved immediately in advance of taking it. No time limit or time restrictions should be imposed by management. Please remember however, that management still retains the right to approve or deny your vacation request but may not use the time of notification as an issue.

Sick leave may be used when reporting to work in the morning for a minimum of 2 hours. The language in the last contract only afforded members the right to use sick leave for whole days and in those instances when an employee came to work, subsequently became ill and wanted to use sick leave for the remainder of the day. In the event an employee is ill or has medical issues that need attention in the morning prior to reporting for work he/she is now permitted to use sick leave to cover these occurrences but can only do so in an amount of 2 hours or greater.

Should any members not being granted the right to use their vacation or sick leave accrued in the manner outlined above please contact your Shop Steward or Committeeman at once.

Christmas and the New Year are upon us. While Thanksgiving is the holiday to give thanks Christmas is the holiday to simply give. It makes no difference what it is you give, be it a gift, a kind word, a helping hand or a shoulder to lean on, the act of giving is rewarding not only to those who receive but to those who give as well. As brothers and sisters of this great union we should do our best to look for the good in one another and put aside our differences. The overwhelming majority of us have done that in the past eighteen months and with that unity we have accomplished great things.

May God bless you and your family during this holiday season and throughout the New Year.

INSIDE THIS ISSUE

Straight Talk



Financial Report



Chairman's Corner



News from Local 1069
Committees



UAW BUZZ



A Message from the
Educational Director



Good News-Bad News



Home Sweet Home

NEWS FROM LOCAL 1069 COMMITTEES



HEROIN ABUSE

Heroin is a highly addictive opiate drug, which is processed from the painkiller Morphine. Heroin is the most addictive illicit drug known and has been ruining lives for hundreds of years.

This drug is usually sold as a white or brownish powder, or as a black sticky substance called "black tar". Heroin is sometimes cut with powdered milk, cornstarch, quinine, or even poisons such as strychnine. In the past, heroin was almost always injected into a vein, but in recent years it has been made in a form that can be snorted or smoked.

Heroin abuse has a variety of both short and long term effects. It quickly produces a huge level of tolerance - finding the abuser with the need to increase dosage, in order to get the same effect. This drug permanently damages the brain and leaves the user open to such risks as: HIV/Aids, Hepatitis B & C, and bacterial infections in the heart.

Withdrawal from heroin can be a miserable process. A very painful process at that, starting with intense cravings for the drug, and leading to emotional distress, restlessness, diarrhea, vomiting, muscle and bone pain. Heroin users have a great risk for overdose, since they always have to up the dose, chasing their high.

Today, street heroin is 10 times as pure as in the past, and is very easy to obtain. With 80,000 people becoming newly addicted to heroin each year, heroin is responsible for nearly 40% of deaths caused solely by a single drug.

If you or a family member is in need of assistance - you are one phone call away from help. Don't let drugs dictate your future to you!!!

Pat Hoffmann, CEAP

CIVIL RIGHTS

UAW Local 1069's Civil Rights Committee would like to take the time to wish you a Happy Holidays & a Prosperous New Year! The holiday season is the time to reflect and share with people who are less fortunate than we are. While our nation is facing the highest unemployment in years and many of our troops are away from their loved ones, we should feel thankful for what we have. As we move forward in the coming year, let's try to make this year even better than the previous one!!!

In Solidarity,
Deneen Beck, Chairwoman

David Durham-Co-Chair

WOMAN'S COMMITTEE

I hope everyone had a Happy Thanksgiving. I want to thank everyone who donated money for our 50/50 drawing. Our lucky winner was Doc Eggleston. The other half of the 50/50 will go to The Minutes of Women Against Abuse Shelter of Philadelphia. This 100 bed shelter helps the client and children with school enrollment, support, transportation, job training, ID documentation, transitional housing, life skills, therapy and counseling etc. Many of the clients needs more time and the shelter needs more funding to aid the numerous women and their children during this extremely difficult period of their lives.

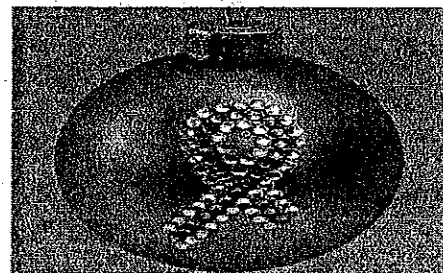
The shelter has asked for our support not only for the holidays but all year round. They are in need of diapers (any size), baby wipes, infant formula, baby food, crib sheets, crib blankets, towels, wash cloths, laundry detergent, toothbrushes, toothpaste, deodorants, batteries (any size) and back to school supplies.

Our first donation was delivered on December 16th. The money raised from the 50/50 went towards some of these items above. Your donations were greatly appreciated!

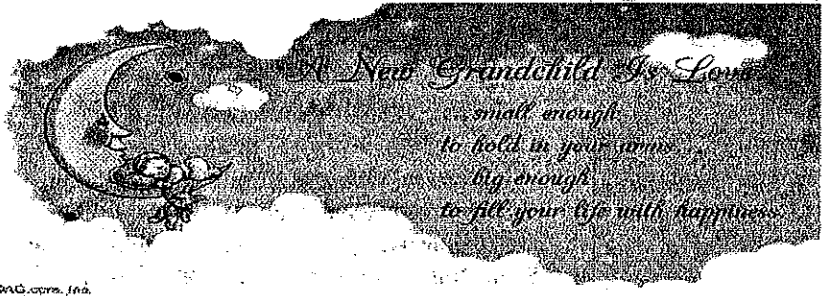
If any Local 1069 women are interested in getting involved with the Women's Committee please contact me at Michelle.A.Peterson@boeing.com. We could use your support.

I want to thank President Forte for this great opportunity and thank our members for their support. Have a happy and safe holiday.

In Solidarity,
Michelle Peterson, Chairwomen



UAW BUZZ



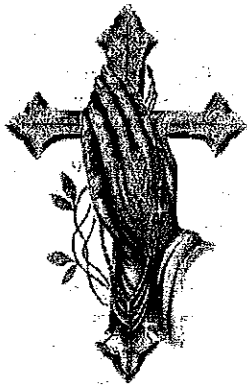
©WAG.com, Inc.

★ Bill and Pamela Leggett welcome their second grandchild this year!
Baby Sebastian Ryan Busque was born on September 10, 2009
Weighing in at 6lbs, 12oz. to proud parents, Ryan Busque &
Jessica Goldsbrough.

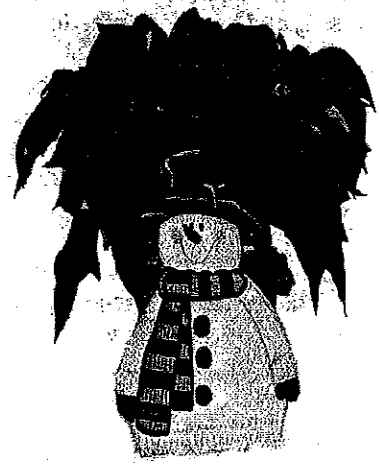
**I'm retired - Goodbye
Tension
Hello Pension!**

George Heckman
John Joyce
Edwin Kilby
Carl Olszewski
Mack Parker
Fred Woen III
Edward Zaniev

REST IN PEACE



- James Barnhart
- Ronald Brady
- Joseph Cesaro
- Francis Gimbel
- James Innes III
- John Jacobsen
- Frank Lawler
- Jeffrey Mace
- Barbara McCullouch
- George Munce
- Robert Petrow
- Wayne Rann
- John Snyder
- William Thomas Jr.
- James Wilson
- Frank Zlupko



**UAW STORE
COMING JANUARY
2010**



A SPECIAL THANKS FROM THE BARGAINING
COMMITTEE TO LEON JAMES FOR SERVING AS
OUR PHOTOGRAPHER DURING OUR
NEGOTIATION KICKOFF.

A Message from the Educational Director

Dear Brothers & Sisters:

There have been a lot of questions and concerns about changes in the Learning Together Program. After making a lot of phone calls and researching the situation, as of right now the changes made to the program will not affect the union employees. There may be changes coming for us in the near future, however; if or when that time comes, I will get the information out to the membership.

There is still time to utilize the opportunities that exist within the program right now, so take advantage of the gift of Higher Learning. We can secure a future that you can benefit from and be proud of. Composite and sheet metal training will be starting in February 2010.

Please see the column to the right for a copy of the schedule. There are college programs that are designed specifically for adult learners. If you have any questions about these programs, please feel free to contact me at 1-6354 or 610.529.5094.

In Solidarity,
Gary Daniels, Educational Director
UAW Local 1069

The Collegiate Consortium for Workforce and Economic Development Offers the following courses through The Delaware County Community College

Sheet Metal Assembly Training

This workforce development course is designed to prepare students for entry-level employment in the aircraft manufacturing industry. Upon successful completion, students should be able to identify materials used in sheet metal assembly, perform layout, measurement and fabrication of sheet metal assemblies and read and interpret blueprints in preparation for sheet metal assembly.

10-week course: 150 hours of class/laboratory

Tuition: \$3,700 - Materials included

Location: DCCC, Main Campus Technology Building

2/1/10-4/28/10 - M, T, W, R from 3:30 PM - 6:30 PM

Composite Fabrication Training

This workforce development course provides an introduction to the foundation skills and knowledge required for working with composites in the aircraft industry. Terminology, application and general topics in mathematics, drawing interpretation and general hand tools will be taught. Safe/proper operation of fabrication equipment and tools will be stressed. Additionally, an introduction to safety, resins, pre-impregnated material, adhesives and lay-up procedures will be included. Students who successfully complete this course will be prepared for entry-level employment as composites fabricators.

10-week course: 150 hours of class/laboratory

Tuition: \$3,700 - materials included

Location: DCCC, Main Campus Technology Building

2/1/10-4/28/10 - M, T, W, R from 6:00 PM - 9:00 PM

Enrollment is scheduled on a first-come first-serve basis. The maximum for each class is 12 students. Please send your payment by **January 18, 2010** to secure your seat in the course.

The Bennett Mechanical Skills test is required to be taken on the first day of class. The cost for the test is **\$20** money order made payable to **Delaware County Community College**.

Upon successful completion of either course you will receive a Certificate of Completion from Delaware County Community College. The certificate will provide assurance to potential employers that you have earned the skills necessary to apply for employment in the high demand aircraft/rotorcraft industry in Southeastern Pennsylvania and throughout the commonwealth.

To register please call **Debbie Serano** at 215-218-3886 or email serano@collegiateconsortium.org.

MAKING A DIFFERENCE

UAW Local 1069 welcomes home President Forte's daughter, Aubrey Forte from Cambodia where she spent the last four months volunteering and teaching the Khymer Villagers to speak English. Aubrey at 18 years old traveled half way around the world on her own to work with the organization, Bridges Across South East Asia,

Welcome Home Aubrey! Congratulations on completing your volunteering work and touching many lives across the world!



GOOD NEWS-BAD NEWS

By: Marilyn T. Iamain, Esq.

Let's start with some **good** news. The fatal work injuries recorded in the United States were down from 5,657 in 2007 to 5,071 in 2008. The **bad** news, too many workers died. Pennsylvania accounted for 240 of those deaths in 2008, with ninety percent in private industry.

What do these statistics tell us? Employment in some of the most dangerous professions declined, which most likely accounts in part for the reduced number of fatalities. Also, poor reporting practices and budget constraints of government agencies may have delayed the processing of records used to compile data.

I have some more **bad** news. While many of us work tirelessly at trying to improve workplace safety and protect injured workers, many powerful forces are constantly at work against us. The insurance industry has a powerful lobby and a masterful media campaign. This campaign has been waged against workers for many years. Pennsylvania has been a targeted state, with the industry relentlessly trying to limit an injured worker's choice of medical care. The Pennsylvania Workers' Compensation Act, 77 P.S. Section 1, et seq. has been amended numerous times over the past 15 years, always chipping away at the rights of our brothers and sisters. Our political leaders have fallen prey to the cry of industry leaders who are committed to taking away an injured person's right to sue. The rallying cry for tort reform is in reality a way of throwing injured workers away, and not holding industry accountable for its negligence and recklessness. It is an attempt to save money literally on the backs of struggling and dying workers.

Now for some **good** news. You do have rights, but you must assert them. There are people to help, but you must ask. If you are injured by defective equipment, we are prepared to investigate and bring action against the person or company at fault. If you are being denied the right to fair reporting or to payment of medical bills, we are available to help. You do not have to go through difficult times alone. The employers have attorneys, the insurance company have attorneys, and so do you.

At **Schwarz, Cleary, Josem, Schwarz**, we are dedicated to serving the needs of working men and women. We have successful, experienced attorneys, ready to help. We have been instrumental in protecting injured workers and have been the leading attorneys in pivotal law suits. We have successfully recovered awards for the injured, and by doing so, have helped them regain their deserved quality of life. So if you need us or just have a question please call:

Schwarz, Cleary, Josem & Schwarz LLC at 215-640-3200

We are there to help!



HOME SWEET HOME

By: John Ellmore,
Chairman, Safety Committee

The holidays should be a magical time for children. Yet each year, hospital emergency rooms treat about 8700 people for injuries, such as falls, cuts and shocks, related to holiday lights, decorations and Christmas trees.

In addition, Christmas trees are involved in about 400 fires annually, resulting in 20 deaths, 70 injuries and an average of more than \$15 million in property loss and damage. Young children are particularly at risk for injury from sharp objects, such as glass ornaments, or from well-intentioned gifts of toys that are not appropriate to their age. Keep the season merry with this list of safety tips from the American Academy of Pediatrics and the U.S. Consumer Product Safety Commission

Safer Trees and Decorations

When purchasing an artificial tree, look for the label "Fire Resistant." Although this label does not mean the tree won't catch fire, it does indicate the tree will resist burning and should extinguish quickly.

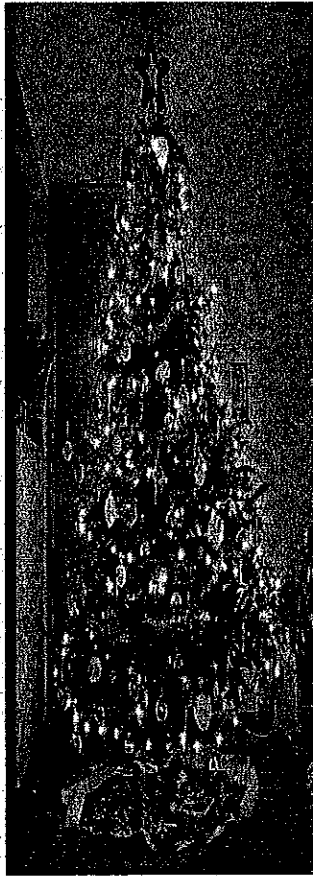
When purchasing a live tree, check for freshness. A fresh tree is green, needles are hard to pull from branches and when bent between your fingers, needles do not break. The trunk butt of a fresh tree is sticky with resin, and when tapped on the ground, the tree should not lose many needles.

When setting up a tree at home, place it away from fireplaces and radiators. Because heated rooms dry live trees out rapidly, be sure to keep the stand filled with water. Place the tree out of the way of traffic and do not block doorways.

Cut a few inches off the trunk of your tree to expose the fresh wood. This allows for better water absorption and will help to keep your tree from drying out and becoming a fire hazard.

Use only noncombustible or flame-resistant materials to trim a tree. Choose tinsel or artificial icicles of plastic or nonleaded metals. Leaded materials are hazardous if ingested by children.

Never use lighted candles on a tree or near other evergreens. Always use nonflammable holders and place candles out of children's reach. Take special care to avoid decorations that are sharp or breakable, keep trimmings with small removable parts out of the reach of children to avoid the child swallowing or inhaling small pieces, and avoid trimmings that resemble candy or food, which may tempt a child to eat them.



Wear gloves to avoid eye and skin irritation while decorating with spun glass "angel hair." Follow container directions carefully to avoid lung irritation while decorating with artificial-snow sprays.

Bright Ideas for Lights

Indoors or outside, always use lights that have been tested for safety by a recognized testing laboratory that indicates conformance with safety standards. Check each set of lights, new or old, for broken or cracked sockets, frayed or bare wires, or loose connections, and throw out damaged sets. Use no more than three standard-size sets of lights per single extension cord.

Never use electric lights on a metallic tree. The tree can become charged with electricity from faulty lights and a person touching a branch could be electrocuted.

Before using lights outdoors, check labels to be sure they have been certified for outdoor use. Fasten outdoor lights securely to trees, house walls, or other firm supports to protect the lights from wind damage. Use insulated staples to hold strings in place, not nails or tacks. Or run strings of lights through hooks (available at hardware stores).

Plug all outdoor electric decorations into circuits with ground fault circuit interrupters to avoid potential shocks. Turn off all lights when you go to bed or leave the house. The lights could short out and start a fire.

Friendlier Fireplaces

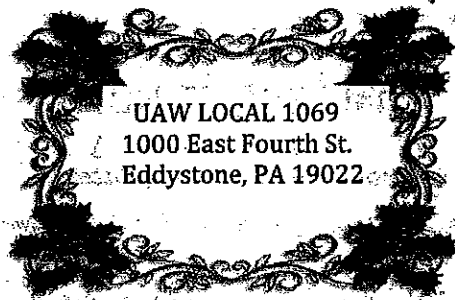
Use care with "fire salts," which produce colored flames when thrown on wood fires. They contain heavy metals that can cause intense gastrointestinal irritation and vomiting if eaten. Keep them away from children.

Do not burn wrapping papers in the fireplace. A flash fire may result, as wrappings ignite suddenly and burn intensely.

Before lighting any fire, remove all greens, boughs, papers, and other decorations from fireplace area. Check to see that the flue is open.

Enjoy Your Holiday Season!

Your Health and Safety Team,
John Ellmore Gary Butterworth Gerard Atkinson
William McAfee John Schlachtun



REMINDER:

**RETIREE MEETING
THIRD WEDNESDAY
OF EVERY MONTH
AT 12:00 PM
Chair, Jerry Patrone**

**GENERAL MEMBERSHIP
MEETING**

**4TH SUNDAY EACH MONTH
10:00 AM
UAW LOCAL 1069 UNION HALL**



**UAW LOCAL 1069
Anthony Forte, President
Editor, Nicole Heffernan**